



2016 Large Farm- Test Plot

Johnson County, IN

From Compass Ag Services, LLC.



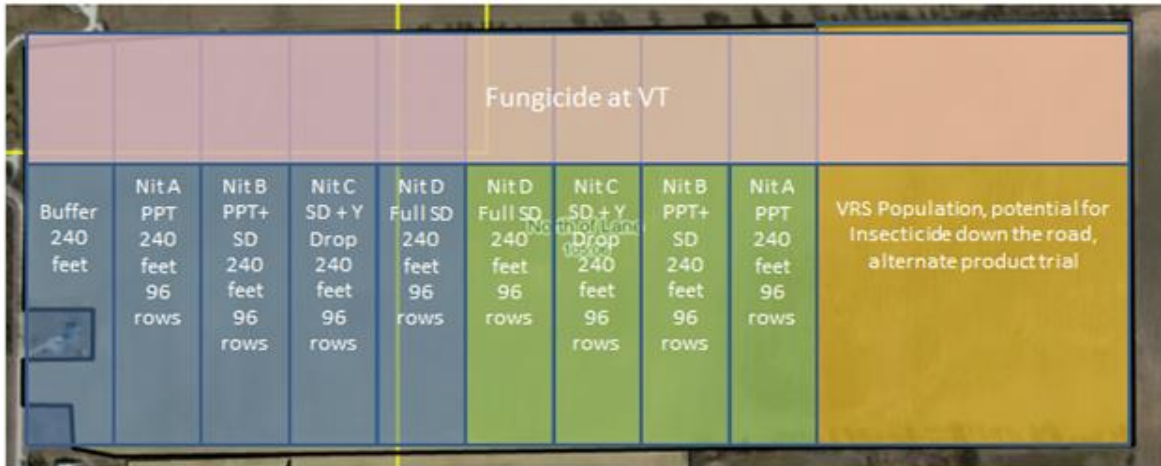
Our goal at Compass Ag has always been to place the best product on each acre, be a trusted advisor, and create the highest return on investment for our growers. For this reason we have started a test farm to try different theories, products, and practices.

In this book you will find the results of a large farm test plot.

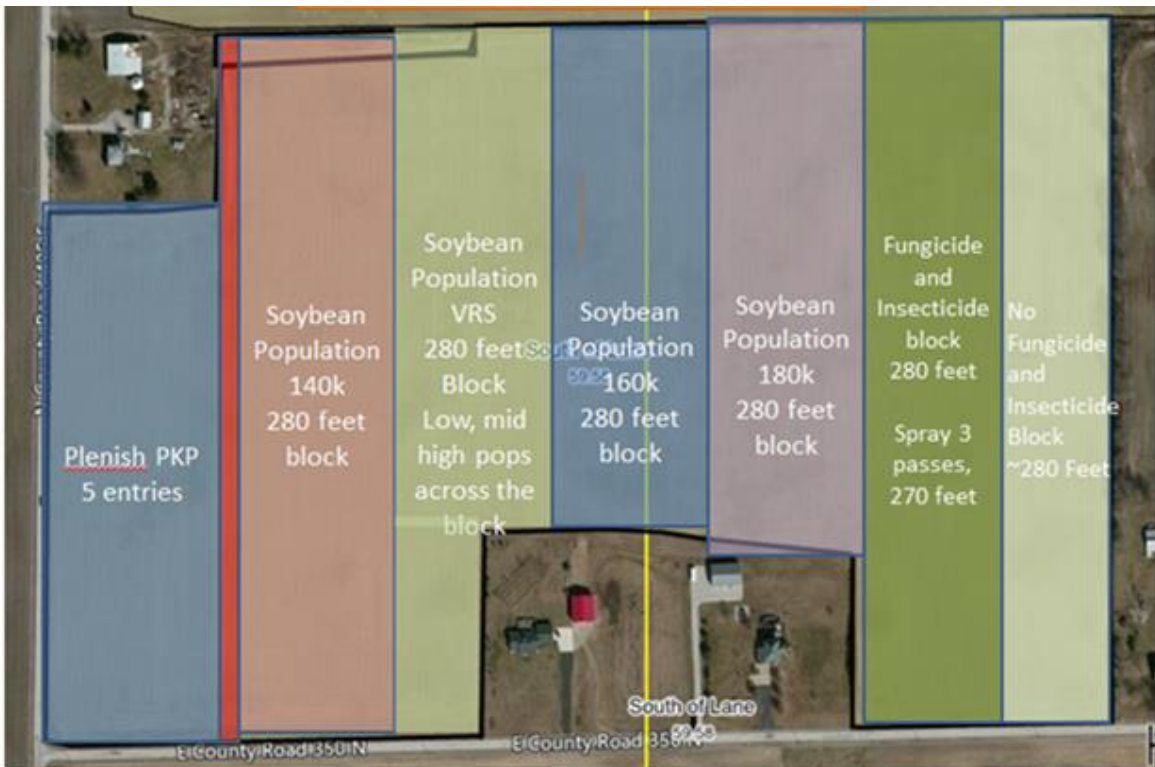
Studies in 2016:

- The effects of Fungicide/Insecticide (corn and soybeans)
- Seeding Populations (corn and soybeans)
- Differences in N methods and timing (corn)

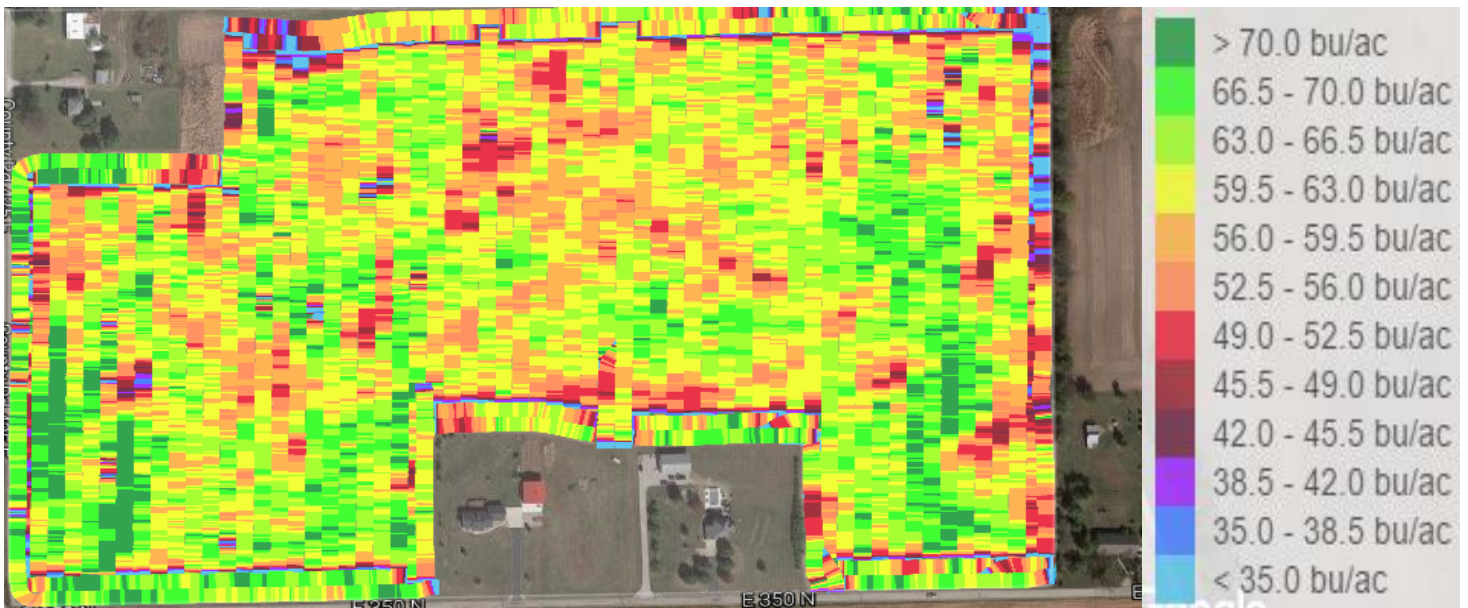
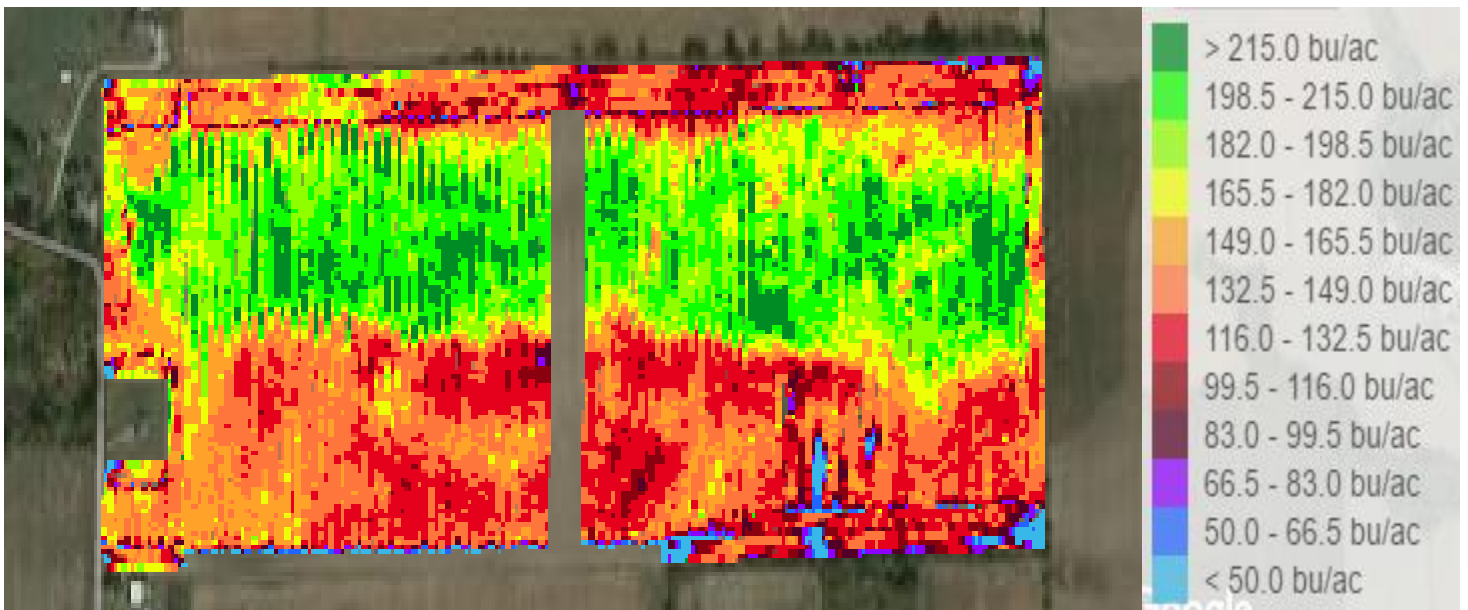
The Plan



Split Planter across the field, P1018E and P1023E
 Blue boxes are 32k
 Green boxes are 36k
 PPT= roughly 200 LB NH3
 SD= V4 encirca sidedress rate
 Y Drop= V10 encirca sidedress rate



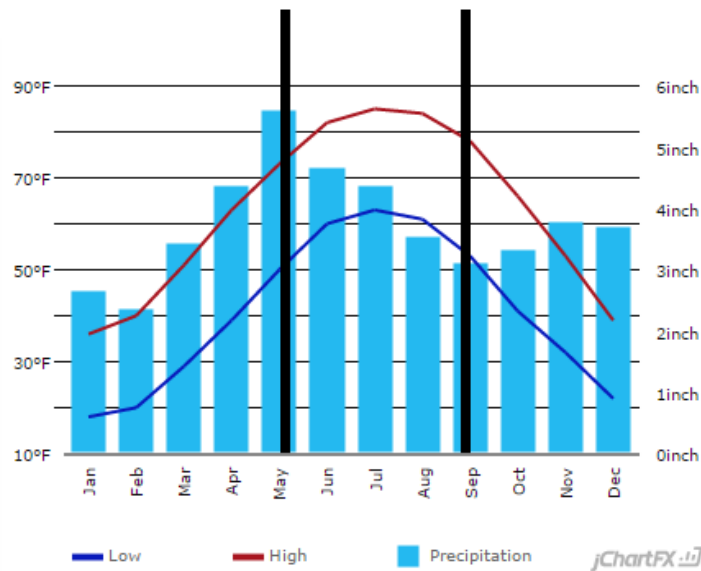
The Results



Rain Fall

Above average rainfall for the 2016 growing season

Stand was excellent across the field, but yield was effected in areas that were poorly drained
(SEE ENCLASS MAP BELOW)



Rain Fall	June	July	Aug.	Total
2016	5.47	8.76	6.53	20.76
AVG	4.37	4.65	3.54	12.56



CORN: FUNGICIDE/INSECTICIDE

Hybrid- 1018E

Sprayed - August 05, 2016

RECIPE:

- 6.4oz of Approach
- 16oz of Prevathon



	YIELD	MOISTURE	REVENUE	COST	RETURN
Sprayed	199.43	25.3%	\$721.43	\$49.50	\$117.38
Unsprayed	148.55	22.3%	\$554.54	\$0.00	-



SOYBEANS: FUNGICIDE/INSECTICIDE

SPRAYED - AUGUST 9, 2016

RECIPE:

- 6oz of Approach
- 1.6oz of Delta Gold



TREATMENT	MOISTURE	YIELD	REVENUE	COST	RETURN
Sprayed	12.67	62.18	\$ 606.26	\$ 12.00	\$ 4.87
Unsprayed	12.78	60.45	\$ 589.39	-	-

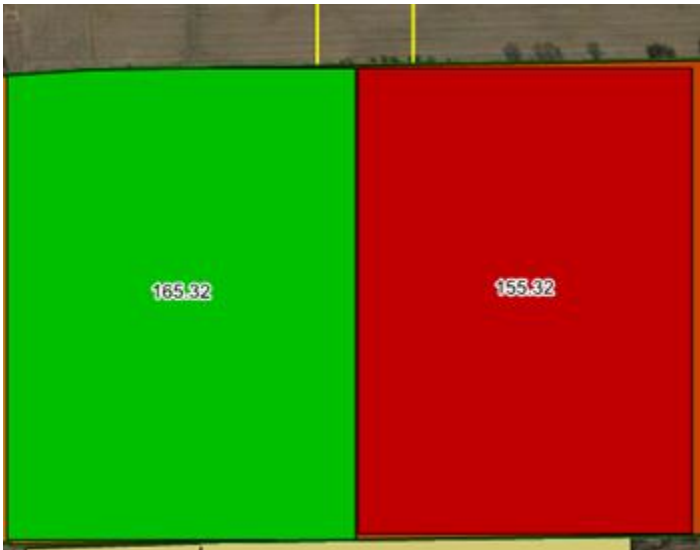
CORN: POPULATION

32K vs. 36K

Hybrid- 1018E

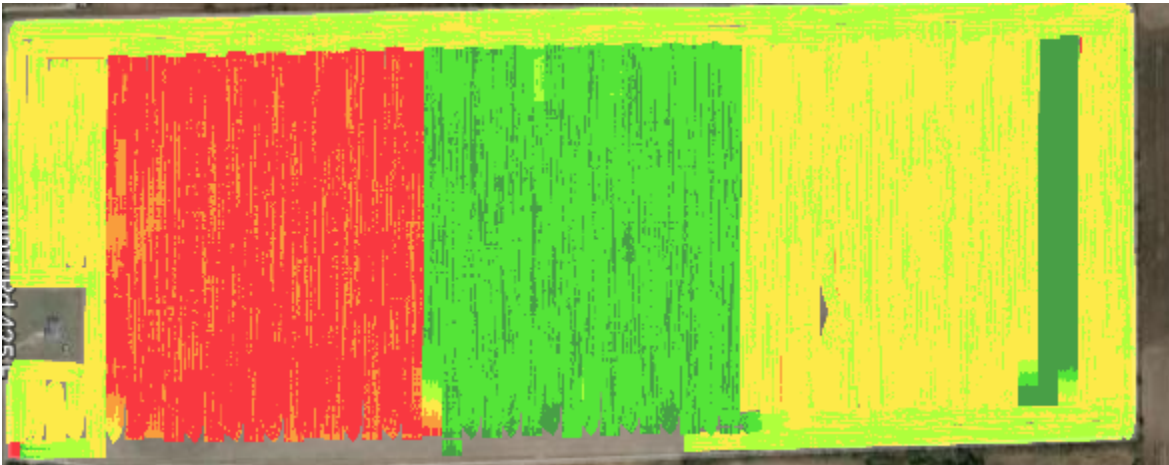
Planted - May 28, 2016

Harvested - October 2, 2016



	YIELD	REVENUE	COST	RETURN
32K	165.32	\$656.32	-	-
36K	155.32	\$616.62	\$9.50	(\$49.20)

Standing water and water damage skewed results across East half of field



SOYBEANS: POPULATION

140K VS VRS. VS 160K VS 180K

PLANTED – JUNE 2, 2016

HARVESTED- OCTOBER 30, 2016



	POP	MOISTURE	YIELD	REVENUE	COST	RETURN
1	CONTROL (175K)	12.67	60.14	\$586.37	-	-
2	140K	12.69	60.81	\$592.90	(\$16.50)	\$23.03
3	VRS	12.69	61.07	\$595.43	(\$2.30)	\$11.37
4	160K	12.81	58.97	\$574.96	(\$7.07)	(\$4.34)
5	180K	12.72	60.57	\$590.56	\$2.35	\$1.84

CORN: NITROGEN STUDY

Hybrid: 1018E

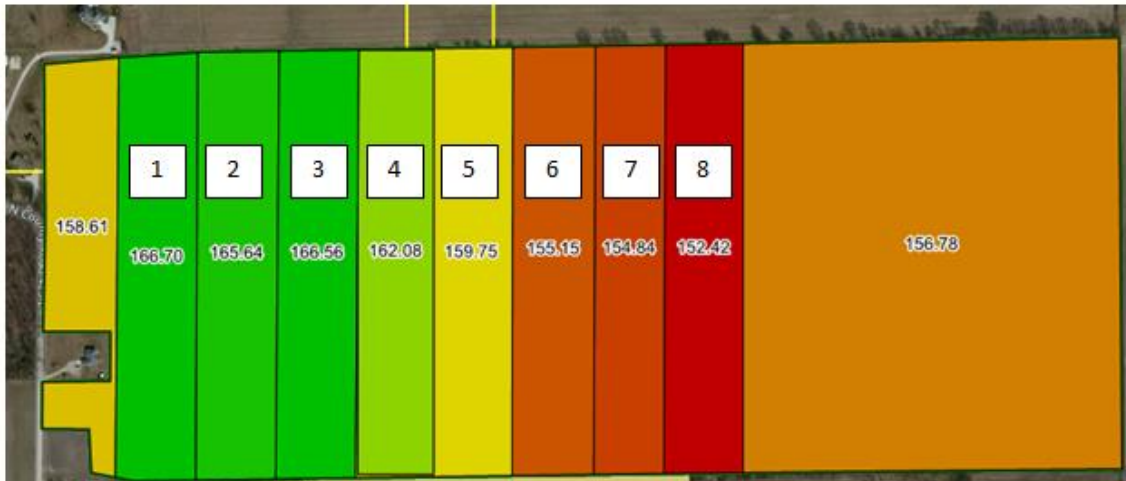
Planted - May 28, 2016

Harvested - October 2, 2016

Pre-plant Urea 50 lbs. of N worked in- May 25, 2016

Side dressed – June 27, 2016 (Full Rate: 135 lbs of N/ Half Rate: 65 lbs of N)

Y-dropped – July 25, 2016 (Rate provided by Encirca @ 60 lbs of N)



	SEEDING	N RATE	YIELD	REVENUE	COST	RETURN
		Field AVG	159.38	\$632.74	\$91.67	-
1	32	Full NH3	166.11	\$659.46	\$55.35	\$63.03
2	32	FULL 28%	164.83	\$654.38	\$91.67	\$21.64
3	32	HALF NH3/HALF Y-DROP	165.01	\$655.09	\$ 52.23	\$61.79
4	32	HALF 28%/HALF Y-DROP	160.3	\$636.39	\$ 52.23	\$43.09
5	36	HALF 28%/HALF Y-DROP	158.95	\$631.03	\$ 61.73	\$28.23
6	36	HALF NH3/HALF Y-DROP	154.09	\$611.74	\$ 61.73	\$8.93
7	36	FULL 28%	153.72	\$610.27	\$101.17	(\$31.97)
8	36	Full NH3	151.85	\$602.84	\$64.85	(\$3.08)

Standing water and water damage skewed results across East half of field

Two Options for Nitrogen Management from Encirca



Pro ****NEW****:

- Hyperlocal weather information
- Nitrogen plan simulations customized for each field
- Field-by-field nitrogen monitoring and alerts
- Industry leading nitrogen model powered by DuPont Pioneer's agronomy science and analytics
- Convenient mobile app to access your nitrogen weather and product planting information



Operational overview with field-level nitrogen, weather, and planting information.



Detailed nitrogen information for each field, including conditions by distinct Decision Zones.



Field-by-field weather driven by the most extensive weather network in the industry.

Premium:

- **PRO LEVEL FEATURES AND.....**
- **Consultation and support from a local Encirca certified services agent**
- **Application timing recommendations**
- **Variable rate prescriptions for Decision Zones based on advanced soil classifications and historical yield data**

SPECIAL THANKS TO:



MILHON AIR INC



The miracles of science™



SHELBY
COUNTY CO-OP